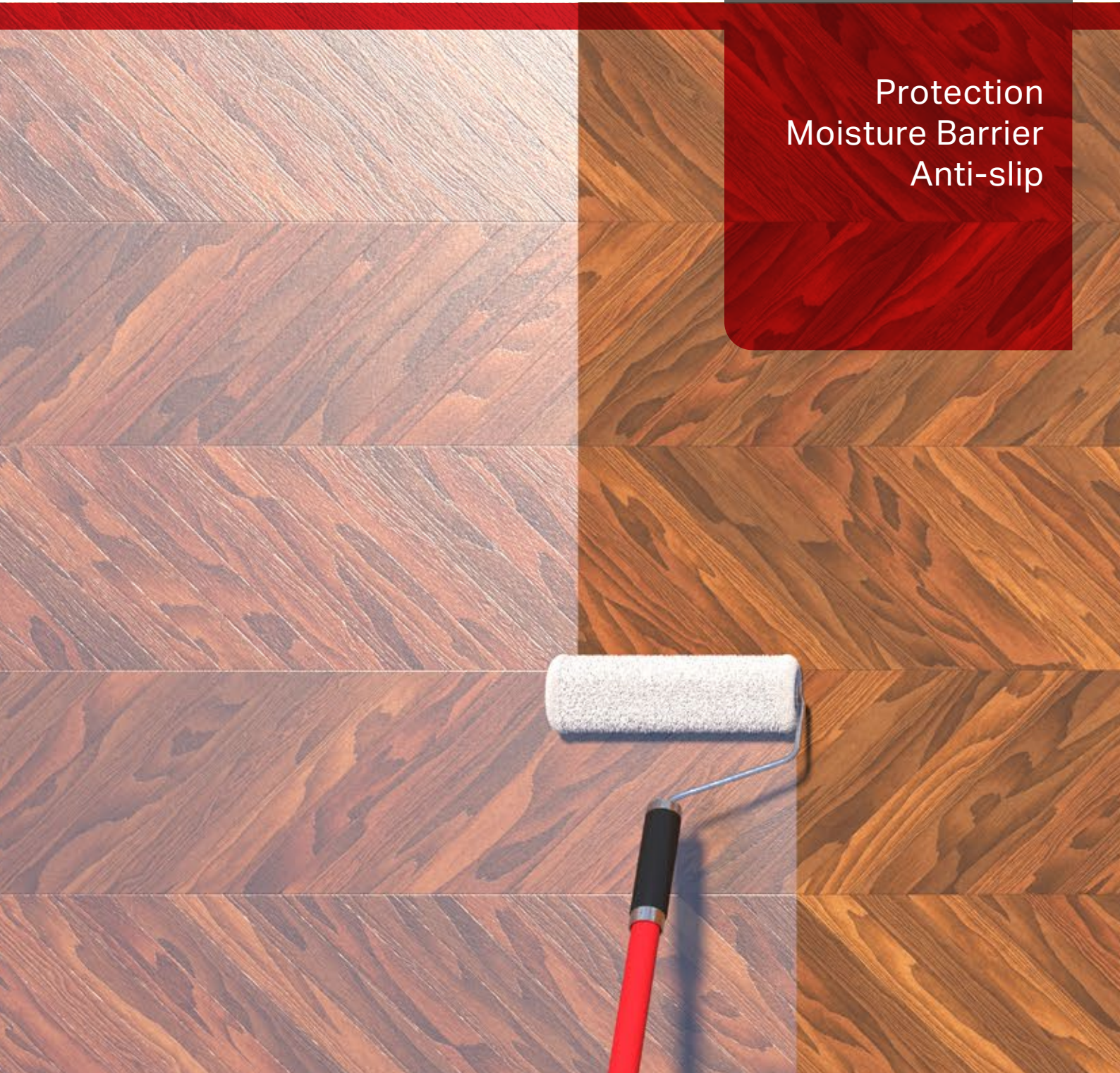




Bond for Life.

Coating Product Guide

Protection
Moisture Barrier
Anti-slip



siegeladhesives.com



GBCA
Compliant

SiegelCoat **Sealer**

SiegelCoat Sealer is a high-performance, fast-curing, water-based timber sealer designed to prepare surfaces for optimal topcoat adhesion.

SiegelCoat Sealer is formulated for easy application and rapid drying, ensuring a professional base and faster project completion. It is suitable for various timber species, including high tannin and Australian hardwood species.



Download Full
TDS | MSDS

Dry Time

Tack Free	40 mins
Sanding	1.5-2 hrs
Full Cure	24 hrs
Solid Content	30% ±2
Application Rate	10-12m ² / Litre



SiegelCoat **2K**

SiegelCoat 2K is a high-performance two component waterborne polyurethane coating system which provides optimal wear protection for timber, parquetry, and cork flooring systems.

SiegelCoat 2K system has been specifically formulated to be easy to apply, ensuring a consistently professional finish with less demanding application requirements.



Download Full
TDS | MSDS

Top Coat Sheen

	Measured at 60°
Gloss	80 - 90
Matte	15 - 30
Satin	40 - 50
Invisible	<10
Application Rate	10-12m ² / Litre



SiegelCoat Complementary Products

SiegelCoat offers a range of complementary products meticulously formulated to work in synergy with their core coatings, ensuring optimal results and extended durability. These products address specific needs, from improving adhesion and safety to enhancing aesthetics and edge protection.

Wet Edge Extender 500ml

Wet Edge Extender helps to overcome problems that could be caused by the coating drying too fast, including poor levelling and the presence of lap marking.



Whitener 100ml

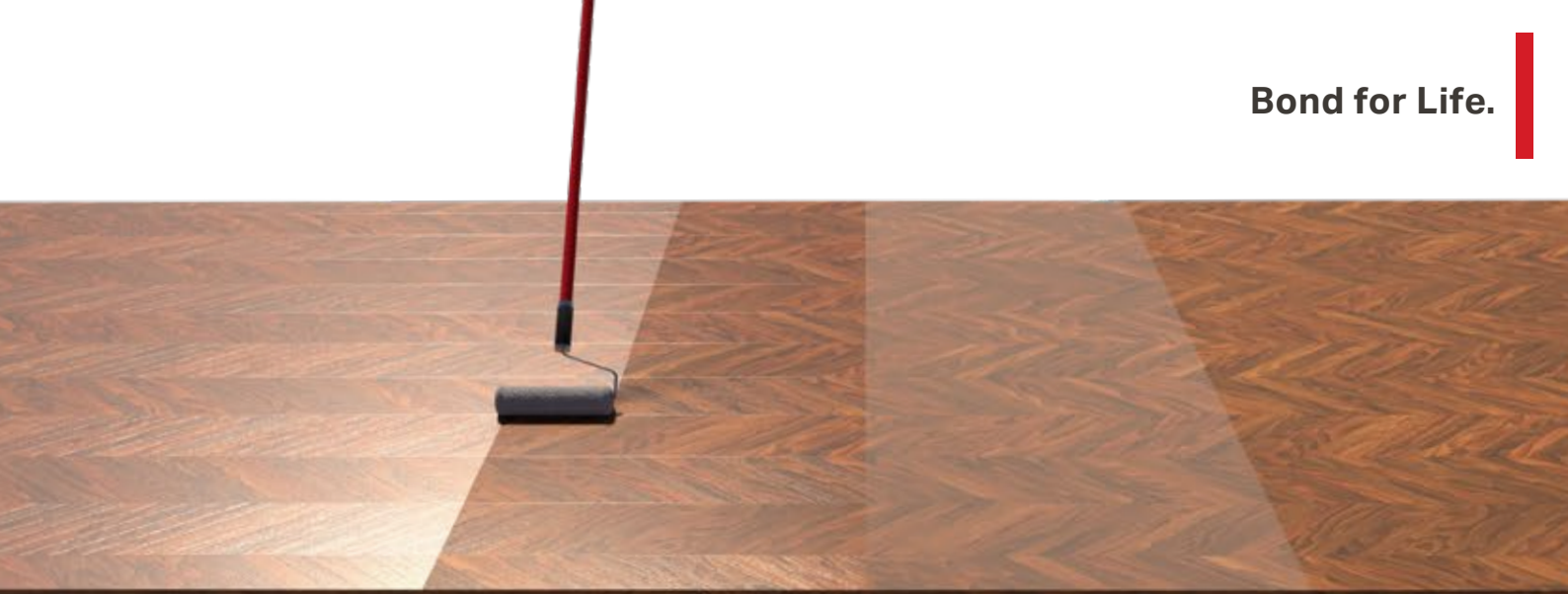
When added to water-based sealers and topcoats, the whitener gives a smooth, brightening finish to wooden floors. The finish may be controlled by application of one or more layers.



Anti-Slip Powder 500g

The Anti-Slip Powder adds a certified slip resistance by adding a subtle texture to the final coating of any SiegelCoat top coat.





SiegelCoat 2K
Timber Floor Coating

SiegelCoat 2K
Timber Floor Coating

SiegelCoat Sealer
Timber Floor Sealer

Timber

System Application

SiegelCoat 2K is recommended for internal use only and is suitable for use on all timber, parquetry, and cork flooring systems. It is also suitable for use in high traffic public spaces such as hotels, restaurants, schools and office buildings.



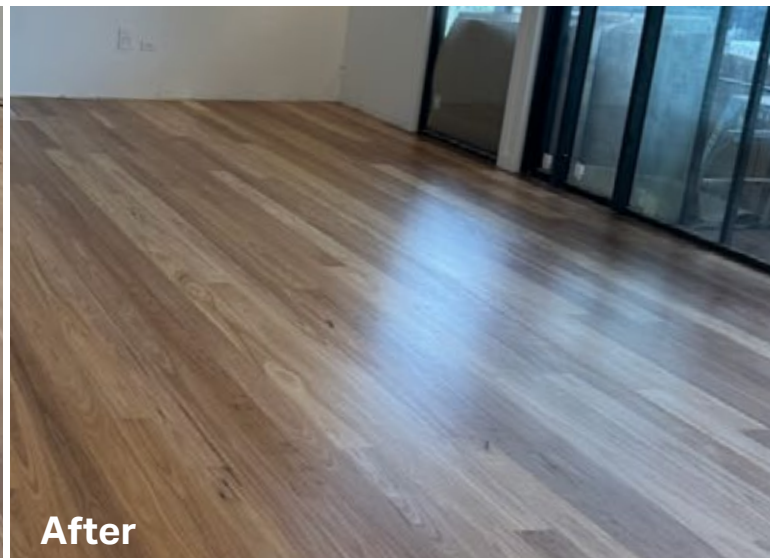
System Benefits

- Excellent flow and levelling properties, reducing lap marks and picture framing.
- Premium PU dispersions for better durability and chemical resistance.
- Superior UV resistance and better visual stability.
- Sandable and will powder up without clogging the sandpaper.
- Very low VOC and classified as non-hazardous.
- Hardens rapidly, offering a full cure within 3 days (25°C at 50% R.H)
- Tested and suitable for various Australian timber species.

Before



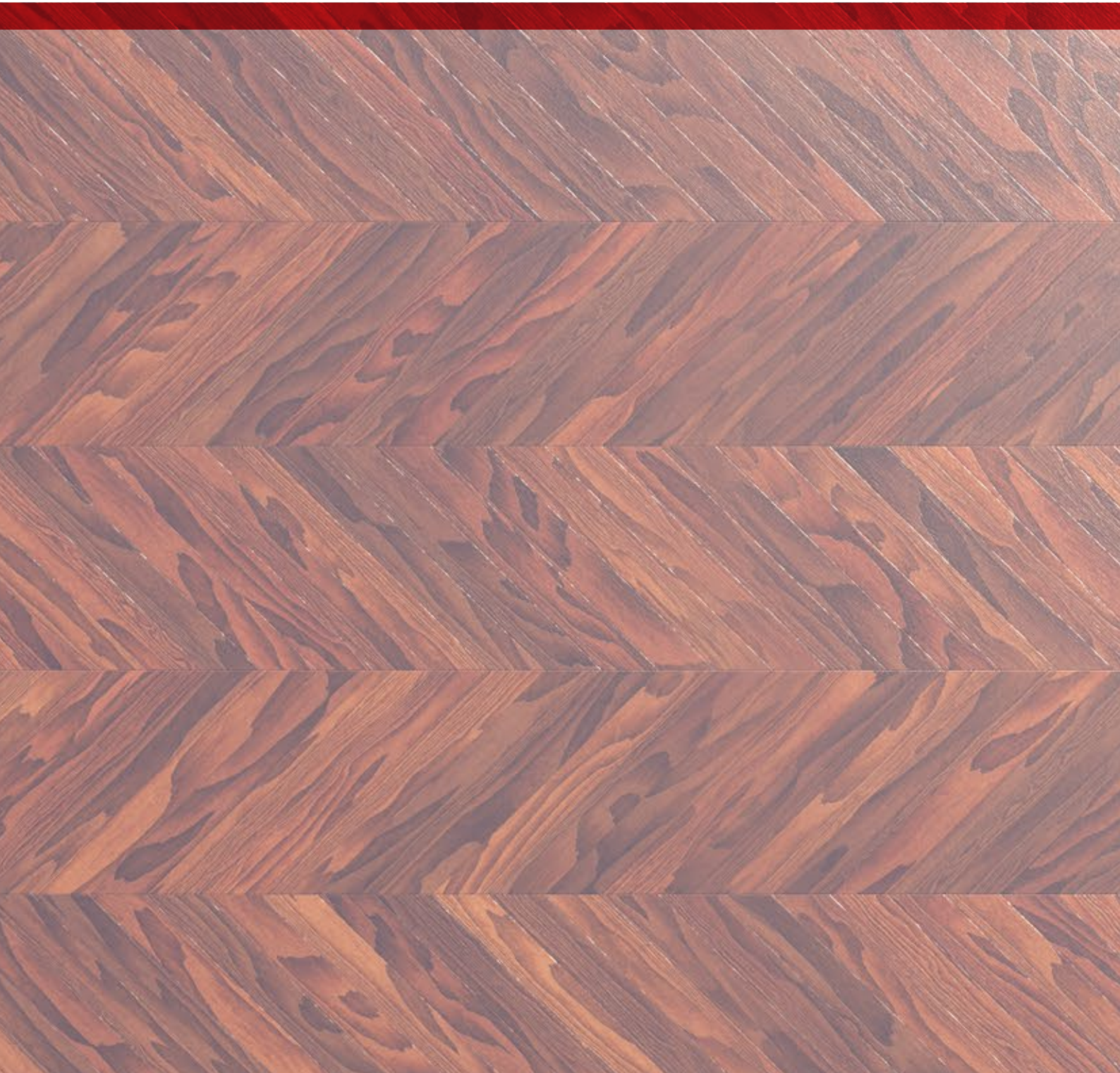
After





SIEGEL

Bond for Life.



© Siegel 2025
Coating Product Guide
Edition 1

AU 02 4868 1771
NZ 025636673
E sales@siegeladhesives.com
W siegeladhesives.com

Locations

Sydney	Melbourne	Brisbane
Adelaide	Perth	Devonport
Auckland	Mildura	Riverina